



P
A
R
K
V
I
L
L
E

Heritage and Place in Parkville

—
ACAHUCH

Australian Centre for Architectural History,
Urban and Cultural Heritage

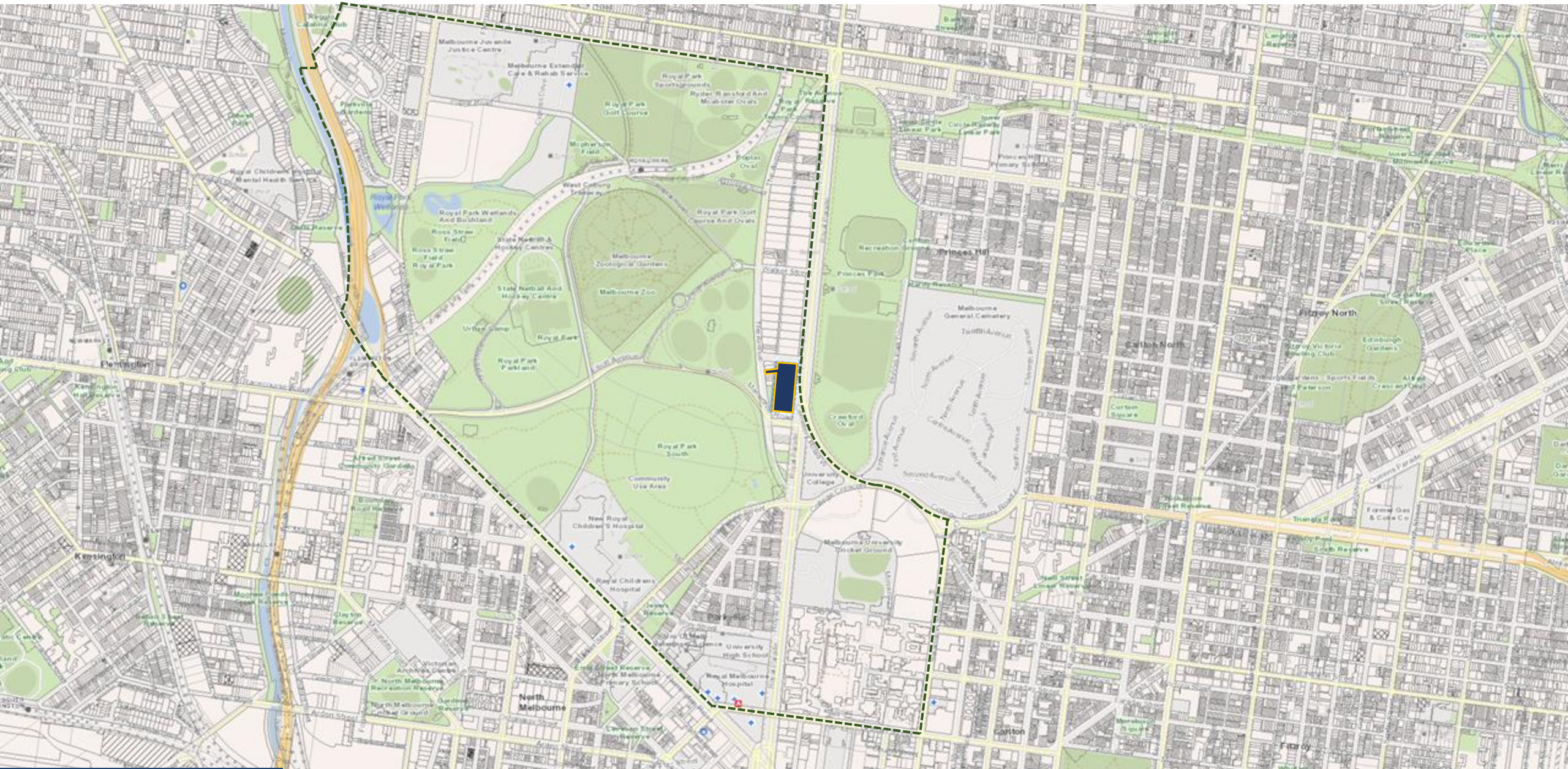
Faculty of Architecture, Building and Planning

Contribution of International House to urban multiculturalism and gender acceptance in Parkville

Subtheme: People

YeeKee Ku

University of Melbourne, Australia



INTERNATIONAL HOUSE
THE UNIVERSITY OF MELBOURNE

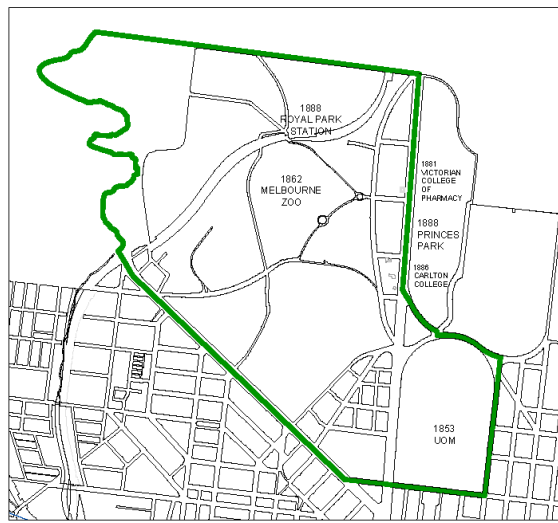
CONTEXT

Contribution of International House to multiculturalism and gender acceptance in Parkville | Presenter: YeeKee Ku | Date: 4 Nov 2022 |

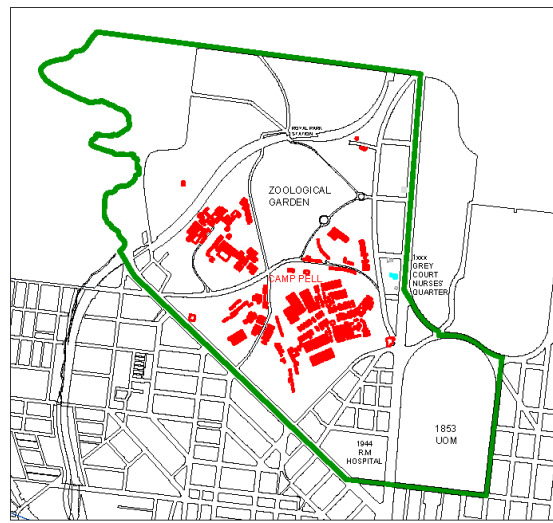


Parkville boundary line

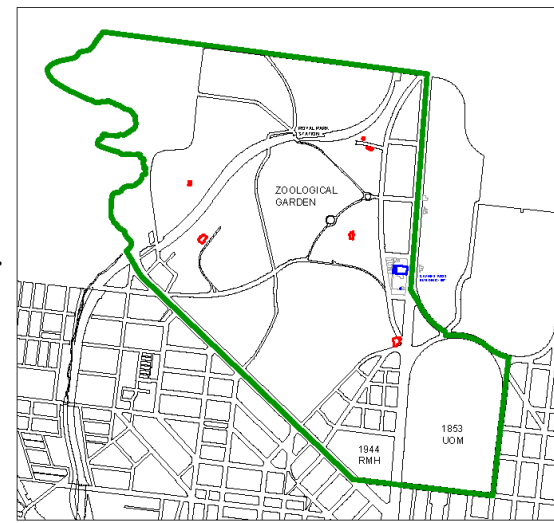
International House



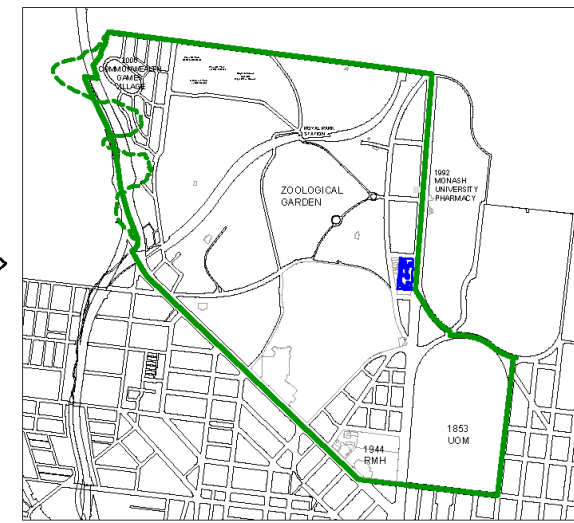
B. 1857 FORMATION OF PARKVILLE



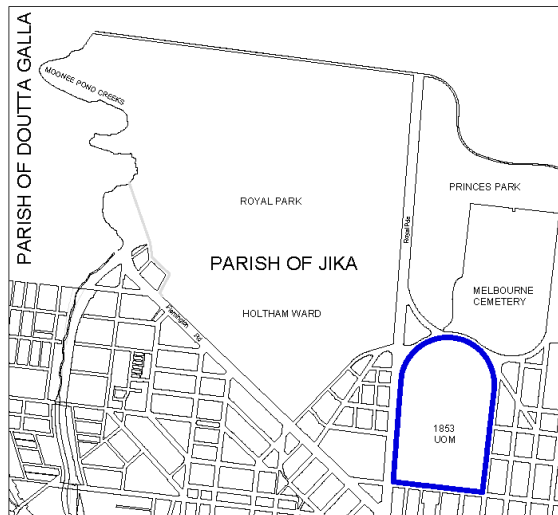
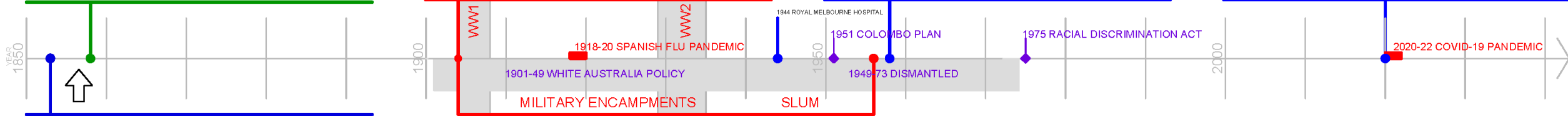
C. 1914-1956 CAMP PELL @ ROYAL PARK



D. 1957 INTERNATIONAL HOUSE



E. 2022



TIME-LINE & CHRONOLOGY MAPS OF URBAN SPATIAL RELATIONS IN PARKVILLE

ROYAL PARK



this experiment in international living was being conducted by University Students, and that it would be tackled therefore in a **spirit of critical intelligence and freedom from prejudice**; and that in pursuing the purposes and principles for which a University stands — truth, tolerance, freedom — these students, assembled from all over the world, would find companionship and understanding as well.

Sir William Clunies Ross

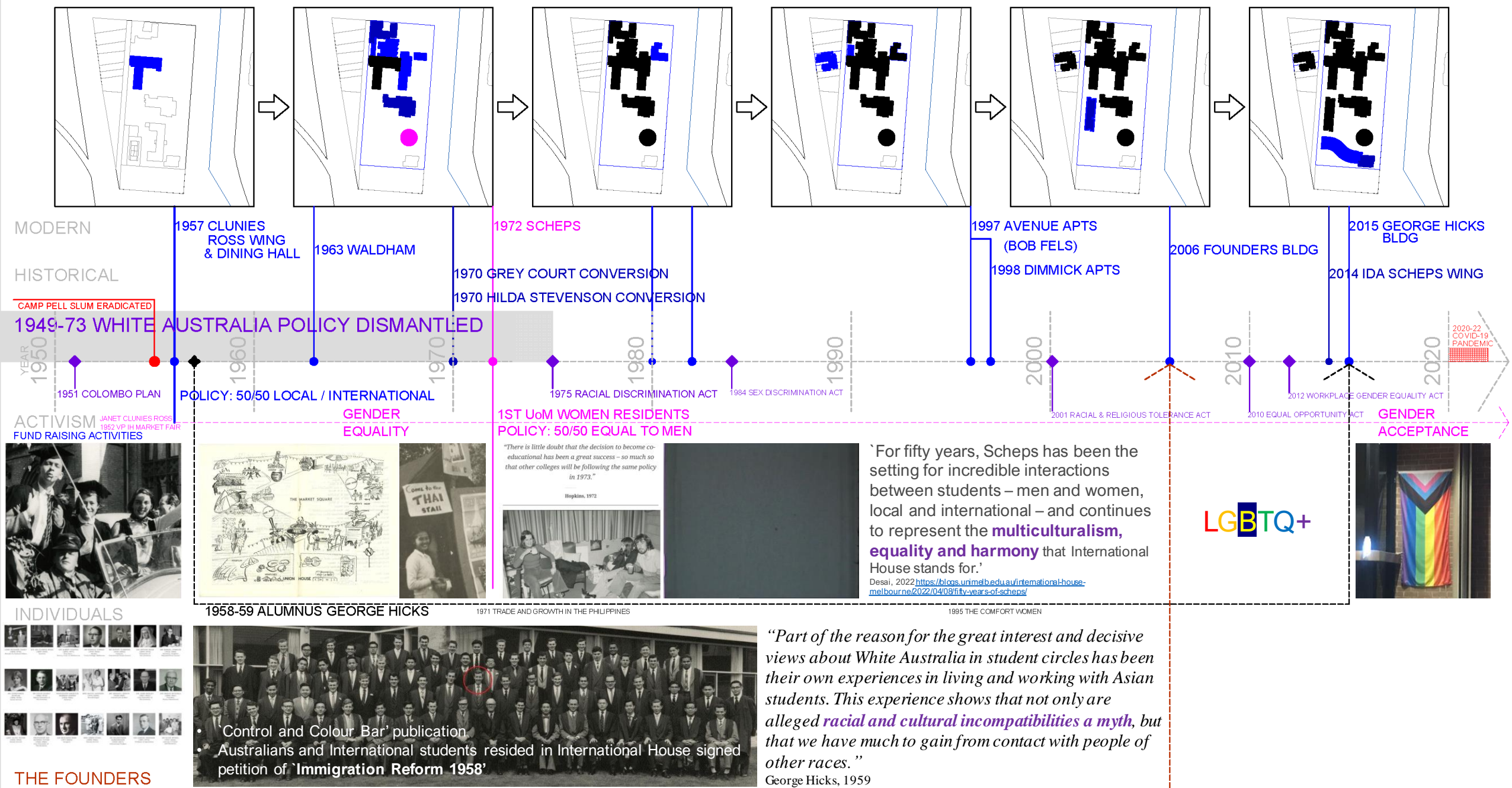


PRINCES PARK

This building forms a microcosm of the world in which young people of many countries live, work and play together... They may be termed opinion-formers and can do much to help break down misunderstanding and social barriers between Australia and her overseas neighbours.

"New Student Quarters Opened", 1963

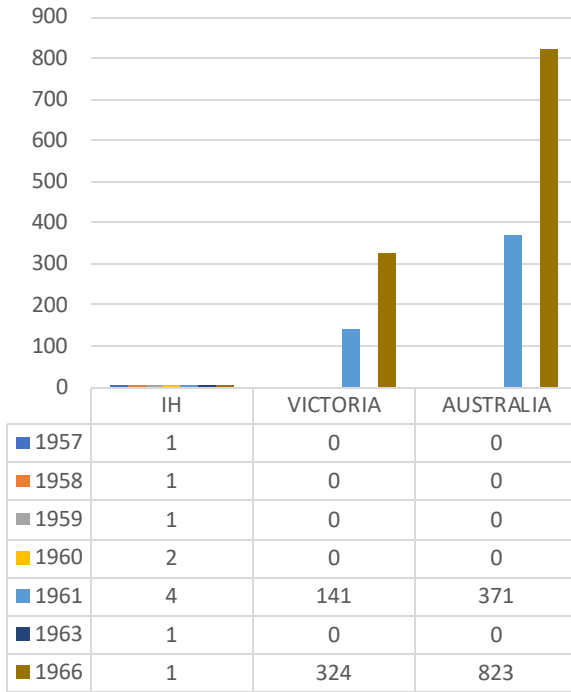




TIME-LINE OF ACTIVISM WITH BUILDINGS' SEQUENCE.

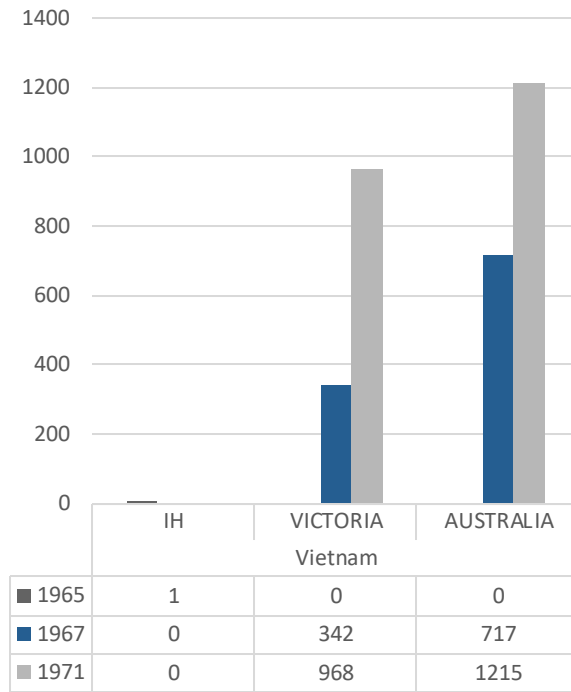
Contribution of International House to multiculturalism and gender acceptance in Parkville | Presenter: YeeKee Ku | Date: 4 Nov 2022 |

THAILAND



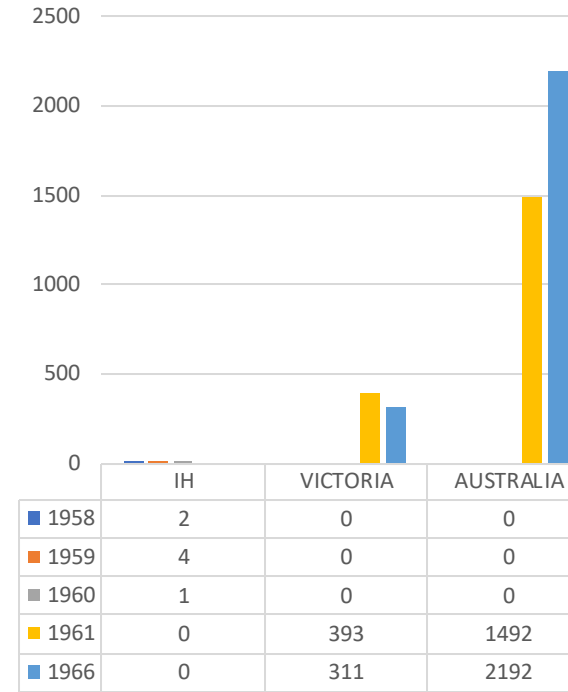
1957 1958 1959 1960 1961 1963 1966

VIETNAM



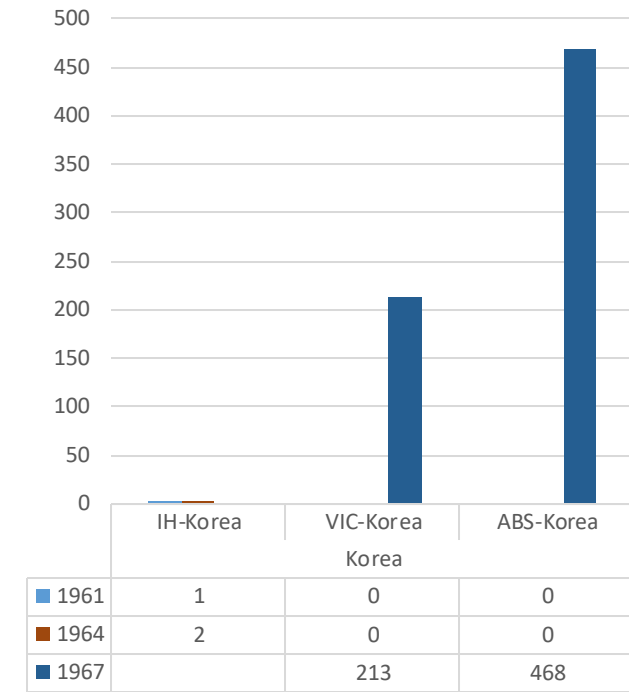
1965 1967 1971

MYAMMAR (Burma)



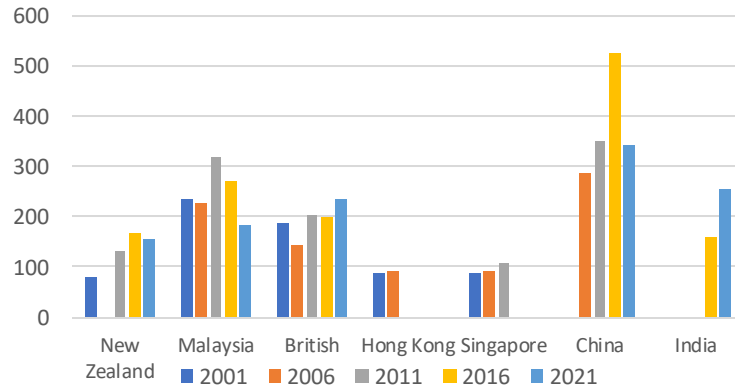
1958 1959 1960 1961 1966

KOREA

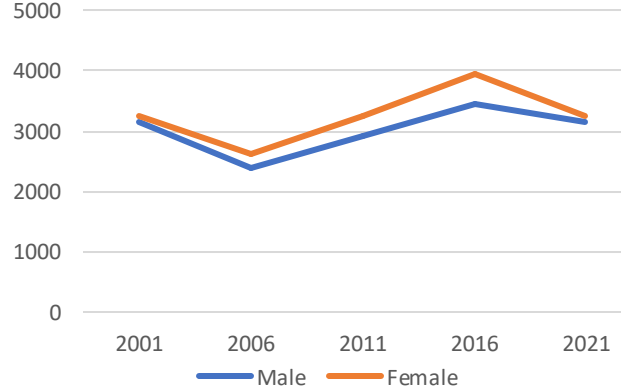


1961 1964 1967

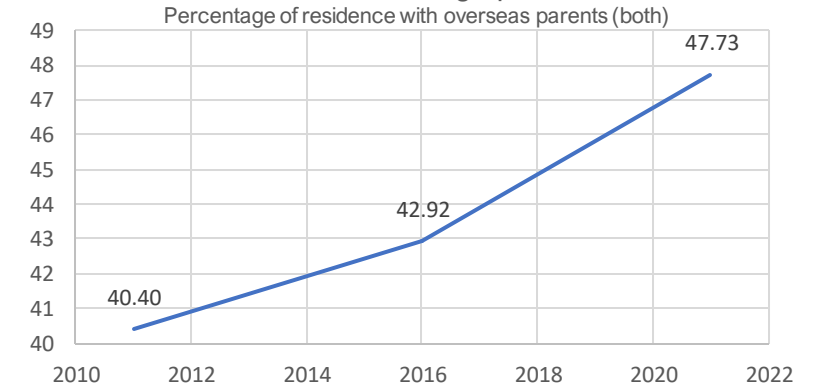
Parkville demographics: Country of origin



Parkville demographics: Gender



Parkville demographics: Percentage of residence with overseas parents (both)



INTERNATIONAL HOUSE
THE UNIVERSITY OF MELBOURNE

ANALYSIS OF INTERNATIONAL HOUSE OCCUPANCY RECORD, PARKVILLE / VICTORIA AND AUSTRALIA DEMOGRAPHICS

Contribution of International House to multiculturalism and gender acceptance in Parkville | Presenter: YeeKee Ku | Date: 4 Nov 2022 |

Conclusion

Arguably, IH contributed to changing perceptions at the grassroots level from students to the Parkville community and shaped Modern Australia.



Acknowledgement

- Dr. Caitlin Stone
- Dr. Katherine Firth
- Dr. Deborah Seifret
- Ms. Tamra Keating & Ms. Thu Nguyen
- Ms. Rosemary Hampson & Ms. Maybel Forrest
- Mr. Will Chao and Mr. Shaun Huynh



CONCLUSION